



# Craven-Pamlico Re-Entry Council

## OUR STORY

The Re-entry Council, established by Attorney General Holder in January 2011, represents a significant executive branch commitment to coordinating re-entry efforts and advancing effective re-entry policies. It is premised on the recognition that many federal agencies have a major stake in prisoner re-entry. The re-entry population is one we are already working with — not only in our prisons, jails, and juvenile facilities, but in our emergency rooms, homeless shelters, unemployment lines, child support offices, veterans' hospitals, and elsewhere. When we extend out to the children and families of returning prisoners, the intersection is even greater.

A chief focus of the Re-entry Council is to remove federal barriers to successful re-entry, so that motivated individuals — who have served their time and paid their debts — are able to compete for a job, attain stable housing, support their children and their families, and contribute to their communities. Re-entry Council agencies are taking concrete steps towards these ends, to not only reduce recidivism and high correctional costs but also to improve public health, child welfare, employment, education, housing and other key reintegration outcomes.

***“Three out of four released prisoners are arrested for a new crime within five years, according to a study of 30 states.”***

***- Bureau of Justice Statistics***

## THIS IS WHAT WE DO...



*Make communities safer by reducing recidivism and victimization*

*Assist those who return from prison and jail in becoming productive citizens*



*Save taxpayer dollars by lowering the direct and collateral cost of incarceration.*



## Our Partners

NC Works Career Center

Habitat for Humanity

Craven County DSS

Craven Community College

Pamlico Community College

North Carolina Department of Corrections-Craven

North Carolina Department of Corrections-

Pamlico

North Carolina Department of Corrections-

Carteret

Coastal Community Actions

American for Prosperity Foundation

Coastal Women's Shelter

Down East Outreach

Recovery Innovations Coastal Community Action

Catholic Charities

Carolina East Health system

Legal Aid of NC

Port Human Services

Eastern Carolina Workforce Development-Craven

Craven County Probation

Vocational Rehab

Prescott Training service

Choice New Bern

Department of Health and Human Services

Wash Away Unemployment

Craven County Commissioners



## SERVICES WE OFFER:

### EDUCATION:

We incorporate resources and partnerships to assist ex-offenders in acquiring literacy and marketable skills, increasing their capacity to obtain gainful employment. The program encourages post-secondary education in vocational and occupationally oriented areas as well as provide assistance in applying for and acquiring federal financial aid programs to pursue traditional college courses for increased educational attainment. In addition to academic enhancement, the program offers classes and workshops that are fundamental in increasing development of cognitive behavioral thinking and empowerment.

### EMPLOYMENT:

Craven Community College WFD/HRD  
Workforce Development  
800 College Court | New Bern, NC 28562  
Phone: 252-638-7248

Computer Skills for Employment  
Gateway to Employment and Careers  
Goal Setting for Careers and Life  
Resumes & Elements of an Effective Job Search  
Social Media Tools for Employment  
HRD Career Readiness Lab  
Budgeting and Banking Basics

### HOUSING:

Housing is an essential part of the Our Program. CPRC understands that every client needs a stable living environment to function effectively in their reentry. We partner with local shelters, transitional housing programs, property owners, and the local housing authorities to assist clients with independent living for a safe and healthier home.

### FAMILY:

We understand that the entire family is adversely impacted by incarceration. Therefore the family reunification component of CPRC provides comprehensive intervention to identify family strengths as well as deficiencies and work with family members to increase their ability to function as a unit. Some of the services provided are:

- Mentoring
- Parenting Classes
- Family Support Services
- Conflict Resolution Strategies
- Child/Caregiver Support Groups
- Fatherhood and Motherhood Training
- Mediation and referrals to assist in child custody issues

**Help Us End  
Recidivism!**

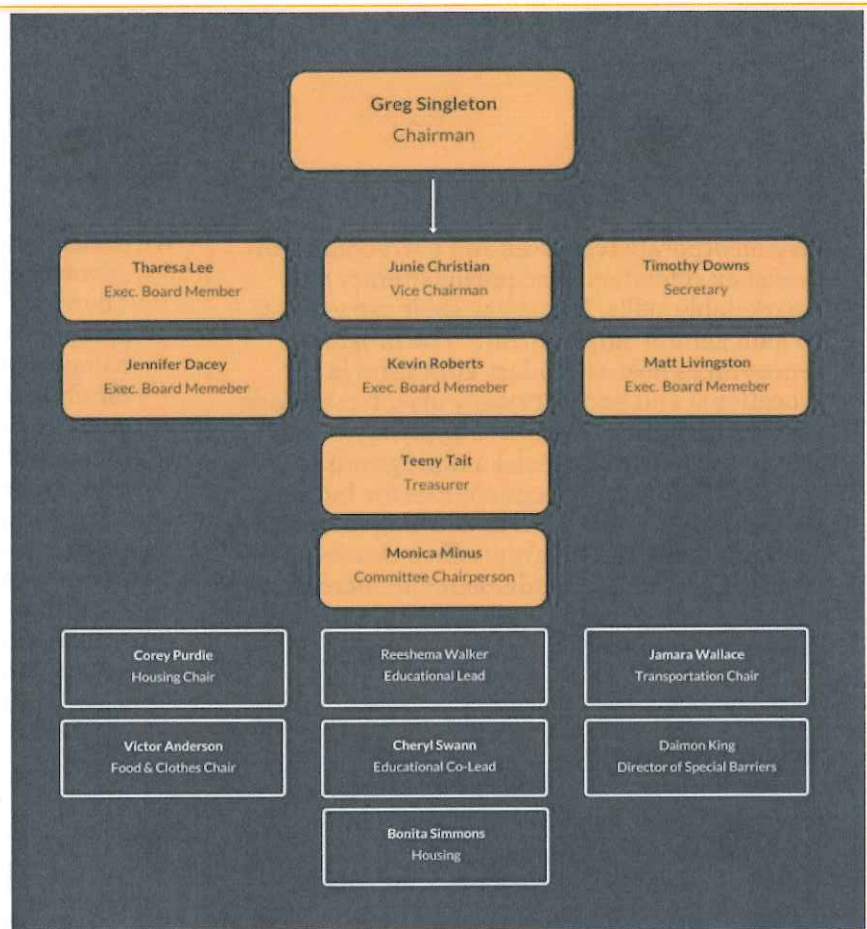
### MENTAL HEALTH AND SUBSTANCE ABUSE:

Mental health is vital to the successful reintegration into the community. Every client is given the opportunity to become aware of the importance of mental health and to access the resources available to help them be successful in reaching their goals. Furthermore, we believe that when we are free of depression, anxiety, excessive stress and worry, addictions, and other psychological problems, we are more able to live our lives to the fullest. The CPRC is present to assist each client reach their personal goals.

# Craven - Pamlico Re- Entry

## Board Of Directors

[cpreentrync.org](http://cpreentrync.org)



### Contact Information:

#### Craven-Pamlico Re-Entry Council

**Craven Office:**  
NC Works  
2836 Neuse Blvd.  
New Bern, NC 28560  
252-514-4828, Ext. 233

**Pamlico Office:**  
Job Link Center  
705 Main St.  
Bayboro, NC 28515  
252-745-9933

[www.cpreentrync.org](http://www.cpreentrync.org)